

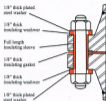
# INGI STYLE - 0888 (Flange Insulations Gasket)

## Type 'E'

### FULL FACE

In this type the central gasket extends across the flange face to the outside diameter affording full protection to the flange. The bolt holes in the gasket match exactly those on the flange thus making installation simple.

Material choice - 1/8" thick Neoprene faced reinforced Phenolic\*, plain reinforce Phenolic or special C.A.F.

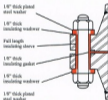


## Type 'F'

### RAISED FACE

In this type the central gasket is located inside the flange bolt circle and sits on the raised face portion of the flange.

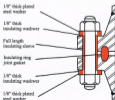
Material choice - 1/8" thick Neoprene faced reinforced Phenolic\*, plain reinforce Phenolic or special C.A.F.



## Type 'D'

### RING GROOVE

This type of oval central gasket is manufactured to locate in the ring groove of the R.T.J. flange and is dimensioned as per the ANSI standards. It is only available in reinforced Phenolic.



# INGI FLANGE INSULATION SPECIFICATIONS

Flange Size	GASKETS		SLEEVES		WASHER		Flange Size	GASKETS		SLEEVES		WASHER		
	ANSI Lb. Class	RTJ API & ASA Ring No.	Number and Size of Bolts	I.D. Inches	Length Inches	I.D. Inches		O.D. Inches	ANSI Lb. Class	RTJ API & ASA Ring No.	Number and Size of Bolts	I.D. Inches	Length Inches	I.D. Inches
1	150	R-15	4-1/2	1/2	1.916	9/16	1.118	150	R-48	8-3/4	3/4	2.716	1.816	1.916
	300	R-16	4-5/8	5/8	1.916	11/16	1.516	300	R-49	12-7/8	7/8	3.716	1.916	1.34
	400, 600	R-16	4-5/8	5/8	2.116	11/16	1.516	400	R-49	12-1	1	4.716	1.716	2
	900, 1500	R-16	4-7/8	7/8	2.116	1.516	1.34	900	R-49	12-1.18	1.18	5.716	1.716	2.316
	2500	R-18	4-7/8	7/8	3.716	1.516	1.34	1500	R-50	12-1.58	1.58	7.516	1.116	3.116
1 1/2	150	R-17	4-1/2	1/2	1.716	9/16	1.118	2500	R-51	12-2	2	10.116	2.116	3.34
	300	R-18	4-5/8	5/8	1.116	11/16	1.516	150	R-52	12-7/8	7/8	2.916	1.816	1.34
	400, 600	R-18	4-5/8	5/8	2.516	11/16	1.516	300	R-53	16-1	1	3.516	1.116	2
	900, 1500	R-18	4-7/8	7/8	2.516	1.516	1.34	400	R-53	16-1.18	1.18	4.516	1.916	2.316
	2500	R-21	4-1	1	3.116	1.116	2	600	R-53	16-1.14	1.14	5.116	1.916	2.716
1 1/2	150	R-19	4-1/2	1/2	1.916	9/16	1.118	900	R-53	16-1.38	1.38	6.316	1.716	2.58
	300	R-20	4-3/4	3/4	1.116	1.316	1.916	1500	R-54	12-1.78	1.78	9.316	1.516	3.12
	400, 600	R-20	4-3/4	3/4	2.716	1.316	1.916	2500	R-55	12-2.12	2.12	13.116	2.916	4.58
	900, 1500	R-20	4-1	1	3.116	1.116	2	150	R-56	12-7/8	7/8	2.116	1.516	1.34
	2500	R-23	4-1.18	1.18	4.316	1.316	2.316	300	R-57	16-1.18	1.18	4.316	1.316	2.316
2	150	R-22	4-5/8	5/8	1.116	1.316	1.516	400	R-57	16-1.14	1.14	5.316	1.916	2.716
	300	R-23	8-5/8	5/8	1.516	1.316	1.516	600	R-57	20-1.14	1.14	5.16	1.516	2.716
	400, 600	R-23	8-5/8	5/8	2.116	1.316	1.516	900	R-57	20-1.58	1.58	6.516	1.716	2.58
	900, 1500	R-24	8-3/8	7/8	3.116	1.516	1.34	1500	R-58	16-2	2	10.716	2.116	3.34
	2500	R-26	8-1	1	4.116	1.116	2	2500	R-60	12-2.34	2.34	15.316	2.116	15.116
2 1/2	150	R-25	4-5/8	5/8	1.516	1.116	1.516	150	R-59	12-1	1	2.116	1.116	2
	300	R-26	8-3/4	3/4	2.316	1.316	1.916	300	R-61	20-1.18	1.18	4.716	1.316	2.316
	400, 600	R-26	8-3/4	3/4	2.516	1.316	1.916	400	R-61	20-1.14	1.14	5.716	1.916	2.716
	900, 1500	R-27	8-1	1	3.516	1.116	2	600	R-61	20-1.58	1.58	6.716	1.716	2.716
	2500	R-28	8-1.18	1.18	5.316	1.316	2.316	900	R-62	20-1.12	1.12	7.716	1.916	2.78
3	150	R-29	4-5/8	5/8	2.116	1.116	1.516	1500	R-62	16-2.18	2.18	13.316	2.516	4.316
	300	R-31	8-3/4	3/4	2.716	1.316	1.916	150	R-64	16-1	1	3.116	1.316	2
	400, 600	R-31	8-3/4	3/4	3.316	1.316	1.916	300	R-65	20-1.14	1.14	4.116	1.516	2.716
	900	R-31	8-7/8	7/8	3.116	1.516	1.34	400	R-65	20-1.58	1.58	5.116	1.716	2.58
	1500	R-35	8-1.18	1.18	4.716	1.316	2.316	600	R-65	20-1.12	1.12	6.116	1.916	2.78
2500	R-32	8-1.14	1.14	5.516	1.516	2.716	900	R-66	20-1.58	1.58	7.116	1.116	3.116	
3 1/2	150	R-33	8-5/8	5/8	2.716	1.116	1.516	1500	R-67	16-3.12	3.12	13.316	2.916	4.58
	300	R-34	8-3/4	3/4	2.916	1.316	1.916	150	R-68	16-1.18	1.18	3.516	1.716	2.716
	400, 600	R-34	8-7/8	7/8	3.716	1.516	1.34	300	R-69	24-1.14	1.14	4.516	1.516	2.716
	150	R-36	8-5/8	5/8	2.716	1.116	1.516	400	R-69	24-1.58	1.58	5.516	1.716	2.58
	300	R-37	8-3/4	3/4	2.116	1.316	1.916	600	R-69	20-1.58	1.58	7.516	1.116	3.116
4	400	R-37	8-7/8	7/8	3.716	1.516	1.34	900	R-70	20-1.78	1.78	8.116	1.516	3.12
	600	R-37	8-7/8	7/8	3.116	1.516	1.34	1500	R-71	16-2.34	2.34	13.716	2.116	15.12
	900	R-37	8-1.18	1.18	4.716	1.316	2.316	150	R-72	20-1.18	1.18	3.916	1.716	2.716
	1500	R-39	8-1.14	1.14	4.516	1.516	2.716	300	R-73	24-1.14	1.14	5.516	1.516	2.716
	2500	R-38	8-1.12	1.12	6.116	1.916	2.78	400	R-73	24-1.12	1.12	6.516	1.916	2.78
5	150	R-40	8-3/4	3/4	2.716	1.316	1.916	600	R-73	24-1.58	1.58	7.116	1.116	3.116
	300	R-41	8-3/4	3/4	2.516	1.316	1.916	900	R-74	20-2	2	9.316	2.116	3.34
	400	R-41	8-7/8	7/8	3.116	1.516	1.34	1500	R-75	16-3	3	14.116	3.116	5.12
	600	R-41	8-1	1	4.716	1.116	2	150	R-76	20-1.14	1.14	3.916	1.716	2.716
	900	R-41	8-1.14	1.14	4.116	1.516	2.716	300	R-77	24-1.12	1.12	5.116	1.916	2.78
6	1500	R-44	8-1.12	1.12	6.716	1.916	2.78	400	R-77	24-1.34	1.34	6.116	1.116	3.516
	2500	R-42	8-1.34	1.34	7.516	1.116	3.516	600	R-77	24-1.78	1.78	8.116	1.516	3.12
	150	R-43	8-3/4	3/4	2.316	1.316	1.916	900	R-78	20-1.12	1.12	11.116	2.916	4.58
	300	R-45	12-1.34	3/4	3.116	1.316	1.916	1500	R-79	16-3.12	3.12	16.116	3.916	6.58
	400	R-45	12-1.78	7/8	3.516	1.516	1.34							

\* If & F Gaskets are made to ANSI specifications unless otherwise specified.

\*\* Sleeves are full length as shown unless otherwise specified.